

Figure 1

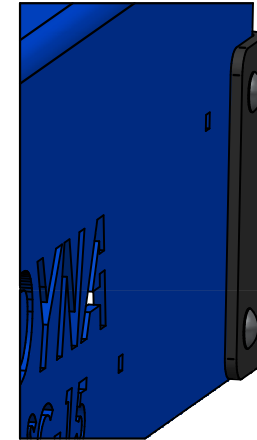


Figure 2

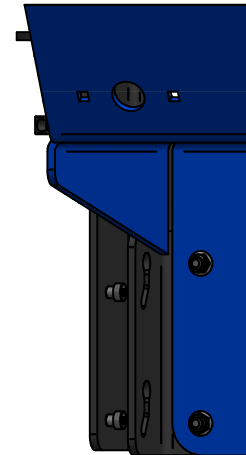
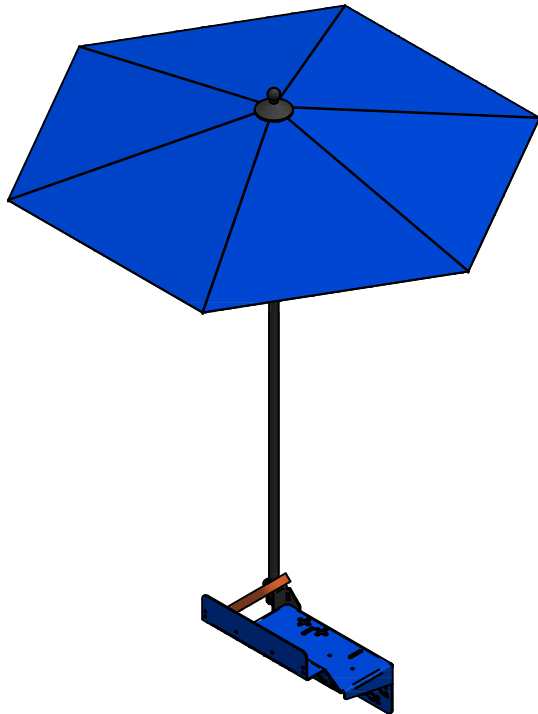


Figure 3

1. Drill holes in control panel according to Figure 1 if required.
2. Attach bracket to control panel using supplied fasteners as shown in Figure 2.
3. Mount umbrella assembly as shown in Figure 3 by sliding studs through keyholes in bracket.
4. Always remove umbrella before transporting.



Drawing No:		
Rainshade Installation		
Title:		
Sheet Name:		
Install		
Part Name:		
Rainshade Assembly		
PartNo:	Model Rev:	
		Sheet 1 of 1

Rev:	Description:	Date:
		5/10/2022